





Notes:
1. Always insure the eyebolts are
properly tightened by hand with
mechanical aid, make sure no gap
exists between frame and eyebolt.
2. The lift angle should be less
than 60°.
3. The eyebolts are designed for
the specified machine weight.
Supervision of additional loads is
not permitted.



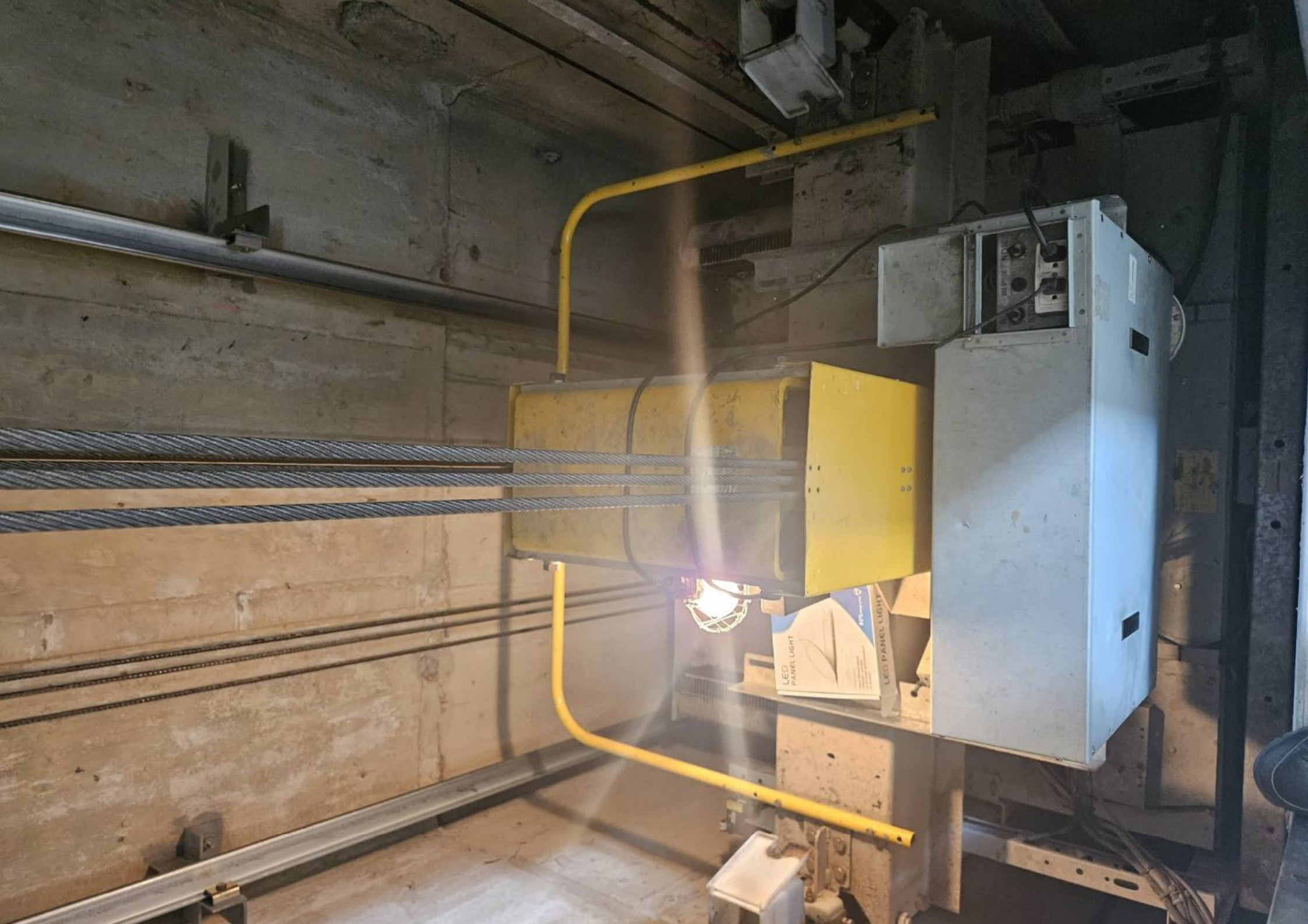
DIAMETER

20723
1000

FORM
98

CE









NR-HB-8-1024-X263 DC 8-24V
100000
REF OV A B
REF INT GRN
REF GRN

















R

13

12

11

8

9

6

5

4

3

1

B1

B2

B3

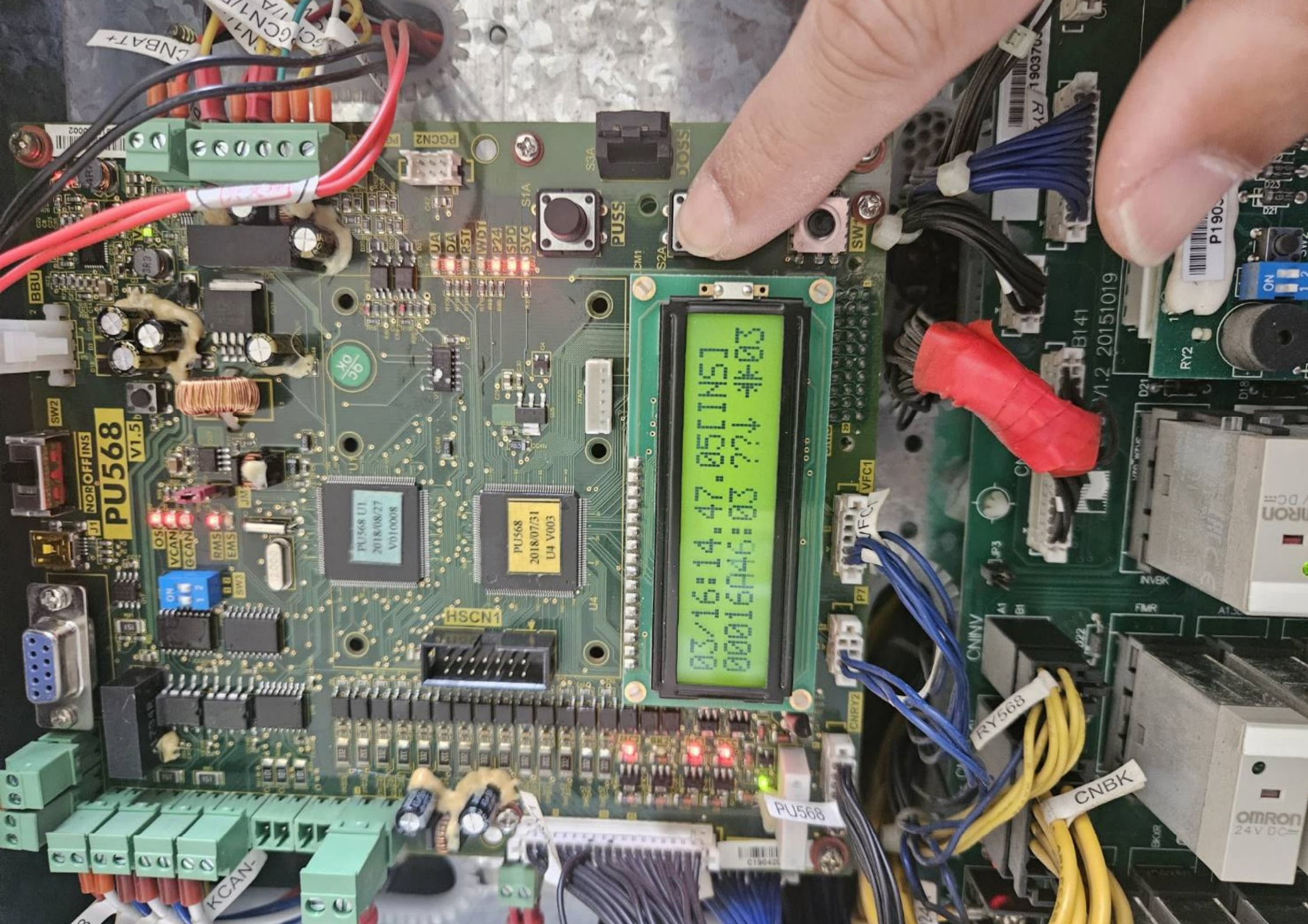


Tel.

EXIT







03/16:14.47.05[INS]
00016A46:03 ?? ? #03

PU568 VI.5

HSCN1

PU568 U1
2018/08/27
V010008

PU568
2018/07/31
U4 V003

PU568

C190422

CNBK

RY568

VI.2 20151019

OMRON
24V DC

OMRON

P190

RY2

B141

RY1

ON

SW2

R2

R2

R2

R2

R2

R2

FMR

NVEK

D21

1750-WTAC

JP3

AI

BI

CNIN

P7

VFC1

VFC1

DM1

S2A

S2B

S3A

DOSS

SW1

B141

RY2

RY1

ON

SW2

R2

R2

R2

R2

R2

RY1

RY2

CNIN

AI

BI

JP3

1750-WTAC

D21

NVEK

FMR

AI

BI

CNIN

P7

VFC1

VFC1

DM1

S2A

S2B

S3A

RY2

RY1

ON

SW2

R2

R2

R2

R2

R2

R2

RY1

RY2

CNIN

AI

BI

JP3

1750-WTAC

D21

NVEK

FMR

AI

BI

CNIN

P7

VFC1

VFC1

DM1

S2A

S2B

S3A

RY1

RY2

CNIN

AI

BI

JP3

1750-WTAC

D21

NVEK

FMR

AI

BI

CNIN

P7

VFC1

VFC1

DM1

S2A

S2B

S3A

RY1

RY2

CNIN

AI

BI

JP3

1750-WTAC

D21

NVEK

FMR

AI

BI

CNIN

P7

VFC1

VFC1

DM1

S2A

S2B

S3A

RY1

RY2

CNIN

AI

BI

JP3

1750-WTAC

D21

NVEK

FMR

AI

BI

CNIN

P7

VFC1

VFC1

DM1

S2A

S2B

S3A

RY1

RY2

CNIN

AI

BI

JP3

1750-WTAC

D21

NVEK

FMR

AI

BI

CNIN

P7

VFC1

VFC1

DM1

S2A

S2B

S3A

RY1

RY2

CNIN

AI

BI

JP3

1750-WTAC

D21

NVEK

FMR

AI

BI

CNIN

P7

VFC1

VFC1

DM1

S2A

S2B

S3A

RY1

RY2

CNIN

AI

BI

JP3

1750-WTAC

D21

NVEK

FMR

AI

BI

CNIN

P7

VFC1

VFC1

DM1

S2A

S2B

S3A

RY1

RY2

CNIN

AI

BI

JP3

1750-WTAC

D21

NVEK

FMR

AI

BI

CNIN

P7

VFC1

VFC1

DM1

S2A

S2B

S3A

RY1

RY2

CNIN

AI

BI

JP3

1750-WTAC

D21

NVEK

FMR

AI

BI

CNIN

P7

VFC1

VFC1

DM1

S2A

S2B

S3A



