



Yellow	Yellow	Yellow	Yellow	Yellow	Yellow
Red	Red	Red	Red	Red	Red
Black	Black	Black	Black	Black	Black

Yellow	Yellow	Yellow
Red	Red	Red
Black	Black	Black

HEADLAMP

















HEADLAMP

消火器

06-11-2020
21
8/17/2020
[QR Code]
[Table with technical specifications]











自警警號
ALARM CH
2108
關

HEADLAMP

B2F



HEADLAMP

火

消防报警系统

2026.03.2

禾聯家電 · 空調
全球總代理

TOSHIBA 日本電器
TWO-SIDEWASH
11.7
TOSHIBA
TWO-SIDEWASH
11.7
TOSHIBA
TWO-SIDEWASH
11.7

Panasonic
全球總代理

日立變頻冷氣

SANLUX 台灣三洋
全球總代理

SAMPO 聲寶
全球總代理

TECO
全球總代理

禾聯家電 · 空調
全球總代理

SAMSUNG

LG

SHARP

SHARP

SONY











HEBGLAM

控制屏操作说明
本屏由以下部分组成：
1. 运行指示灯
2. 报警指示灯
3. 启动按钮
4. 停止按钮
5. 急停按钮
6. 检修按钮
7. 检修解除按钮
8. 检修报警清除按钮

MicroSD

运行 报警

启动 停止 急停 检修 检修解除 检修报警清除

运行报警
报警清除
报警清除
报警清除
报警清除
报警清除





WATER
1.25 4007

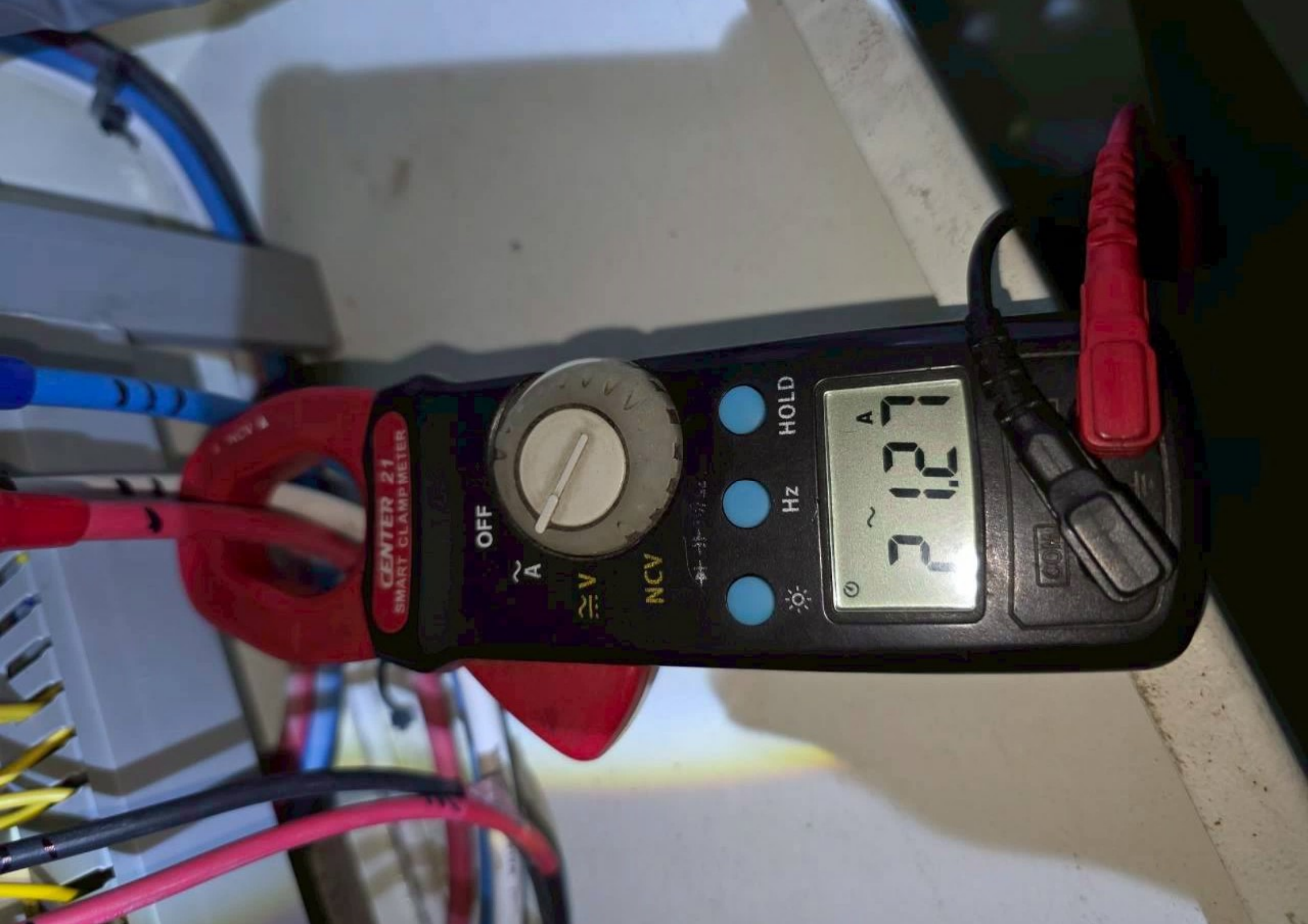
200

200

YONZUKI 18717
MFB1 排煙器







CENTER 21
SMART CLAMP METER

OFF

~ A

≅ V

NCV

☀️

Hz

HOLD

⏻

2.127
A

1000

MPC 照明燈
1.64W 220V/300V



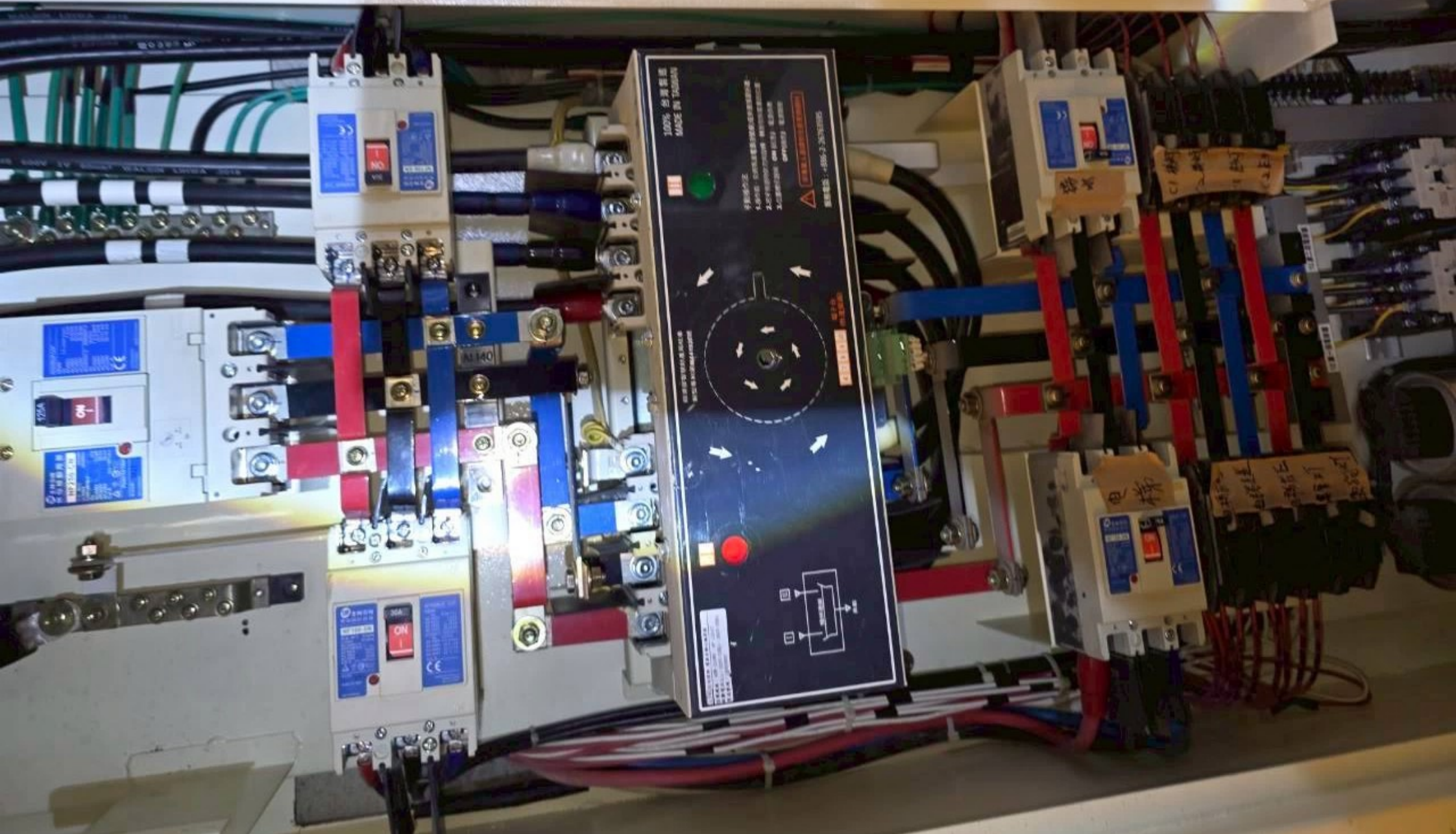
LTK 尚德電有限公司

電源自動切換開關

Automatic Transfer Switches

國際品質保證 ISO9001 : 2000/CHS 12011 國際品質保證
國際品質保證 ISO9001 : 2000/CHS 12061 國際品質保證





100% 台灣製造
MADE IN TAIWAN

- 1. 安全保護
- 2. 防止過電壓
- 3. 防止過電流
- 4. 防止過熱
- 5. 防止短路
- 6. 防止漏電
- 7. 防止雷電
- 8. 防止火災
- 9. 防止爆炸
- 10. 防止污染



125A
ON
125A

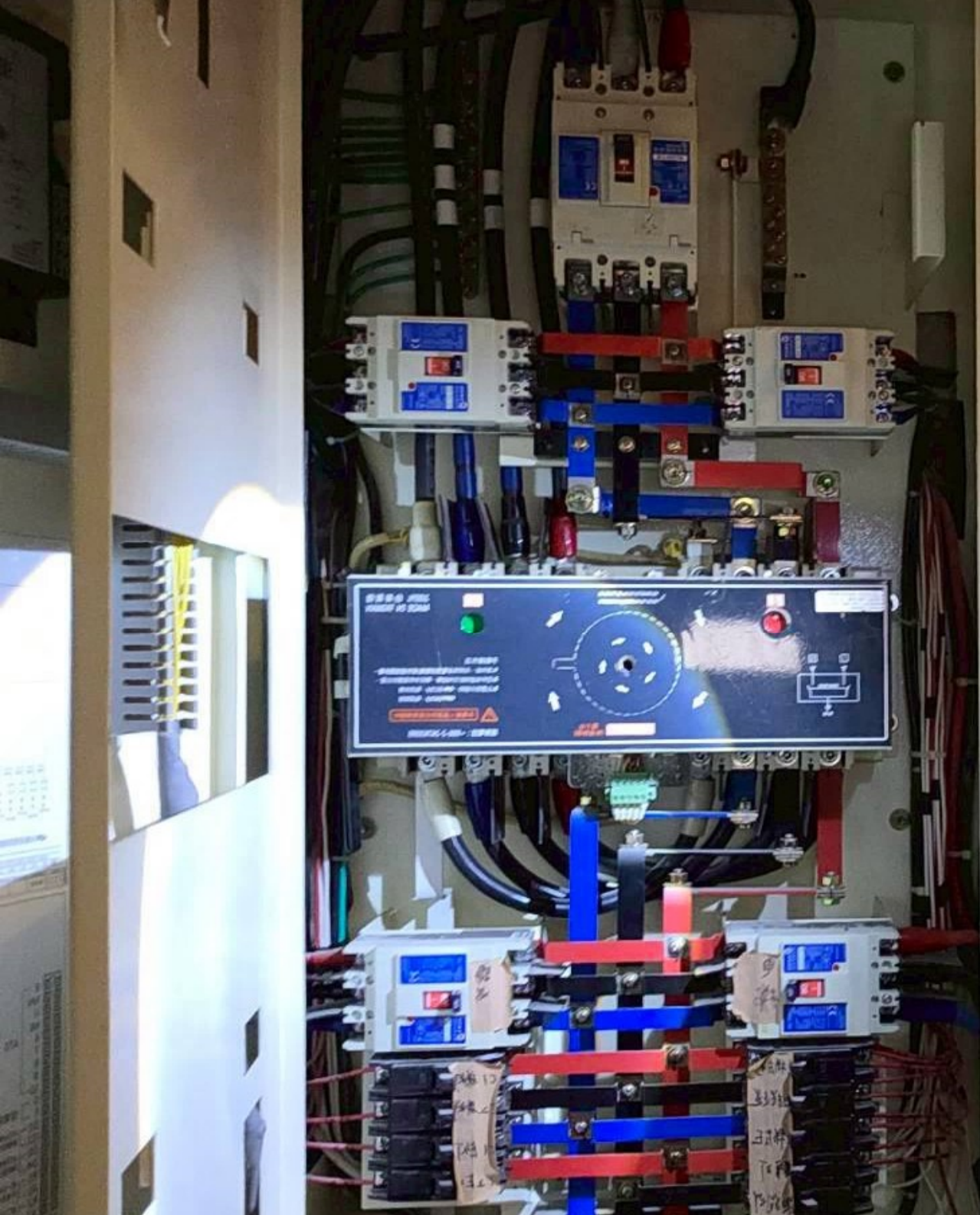
125A
ON
125A

125A
ON
125A

125A
ON
125A

CI 梯

梯



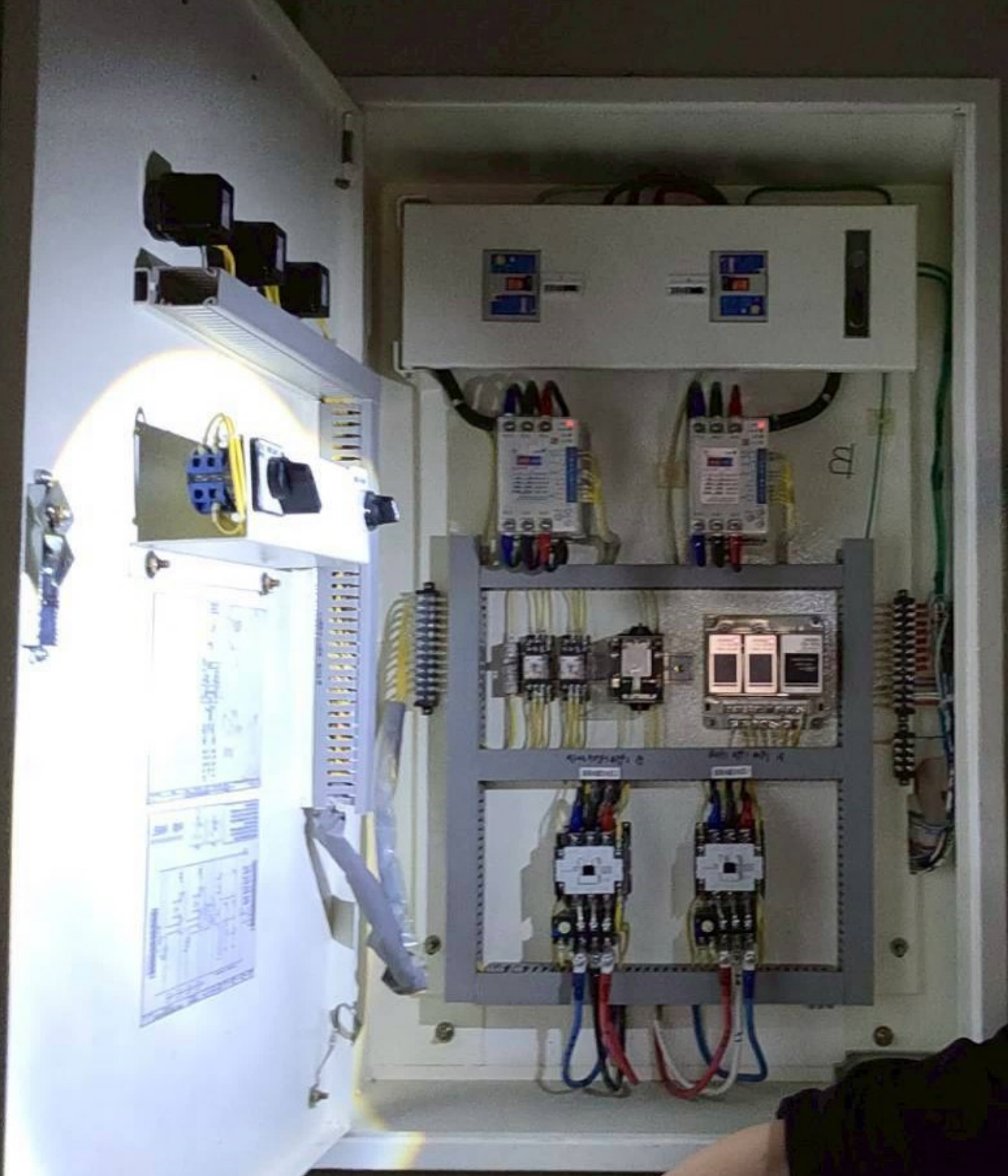


總水機 8/7/9
FANUC 8/7/9



HEADLAMP







CENTER 21
SMART CLAMP METER

OFF

A

V

NCV

A

Hz

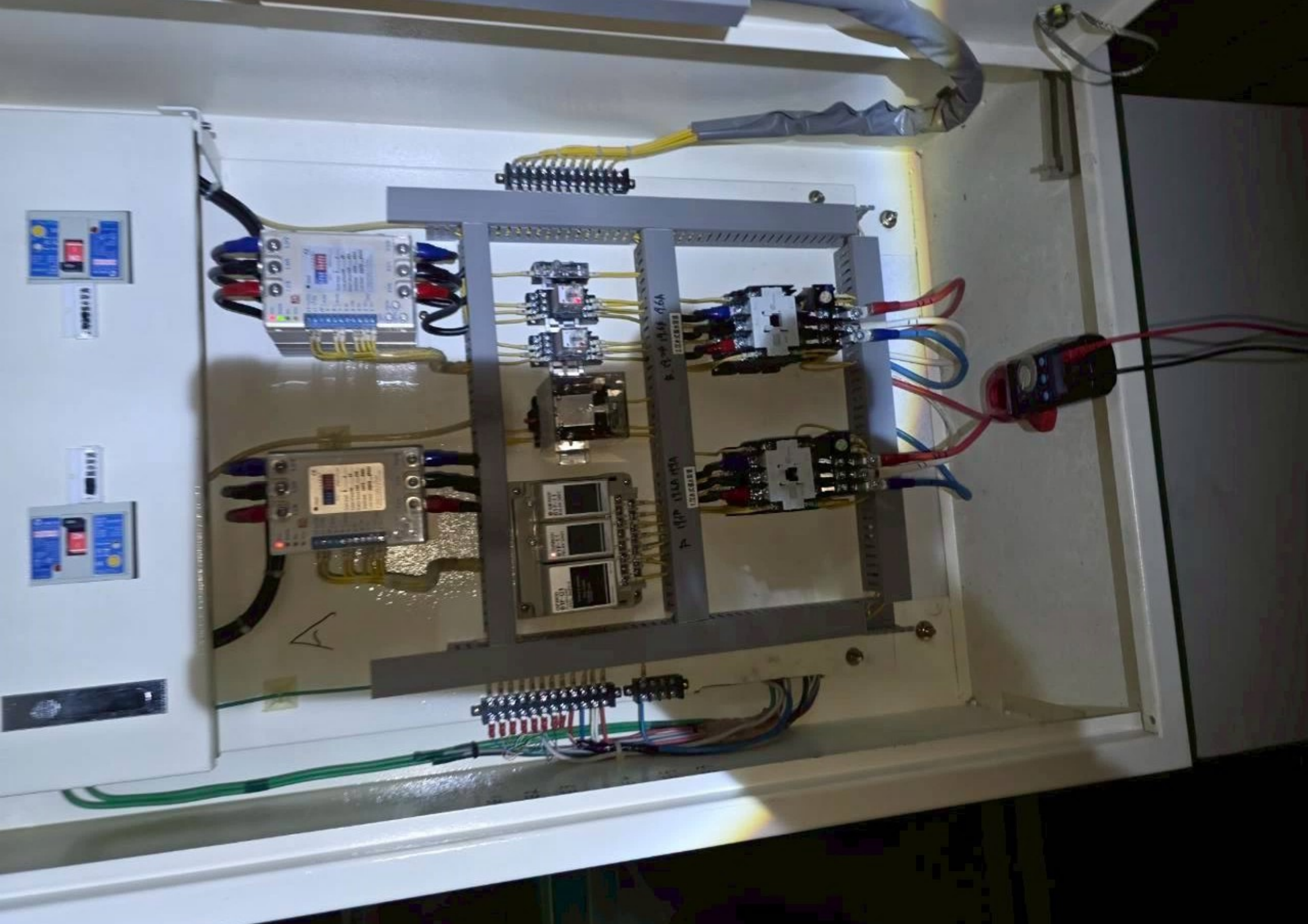
HOLD

19.34
~
A

HOLD

PWA 揚水盤
3.4kW 220/380V





A







CENTER 21
SMART CLAMP METER

OFF

~ A

~ V

NCV

HOLD

Hz

~

19.06^A

16

PSB 廢水盤

3 ϕ 4W

220V/380V

1.廢水泵
運轉



電源燈



2.廢水泵
運轉





1. 廢水泵浦



2. 廢水泵浦

02F A/B

1. 廢水泵浦

2. 廢水泵浦



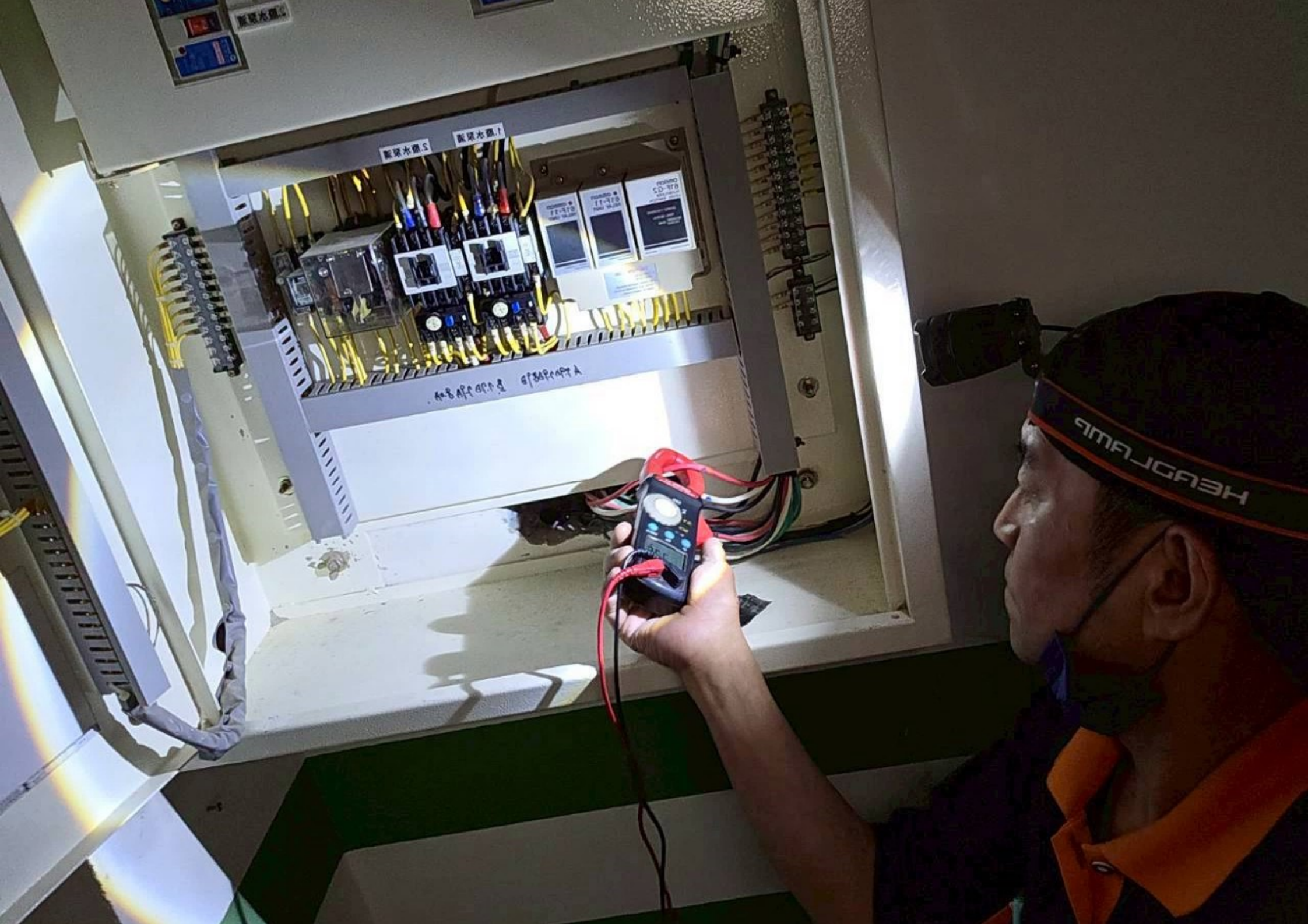
Omron 61F-G2 FLOW SWITCH
RATED OPERATING VOLTAGE: 250VAC
RATED CURRENT: 10A
RATED POWER: 2500VA

Omron 61F-11 RELAY UNIT

Omron 61F-11 RELAY UNIT

A 170990890 B 170990890







CENTER 21
SMART CLAMP METERS

OFF

A

V

NCV

HOLD

Hz

☀

7.71
A

羅布森(股)公司污水處理控制箱
LOBSANG OF THE SEWERAGE CONDITIONER
(ISO-9001) INPUT: 三相 AC 380V

控制電源
OFF ON

電源指示燈

故障指示燈

故障指示燈

故障指示燈

故障指示燈

故障指示燈

手動 停止

手動 停止

手動 停止

放流泵A

放流泵B

手動 自動

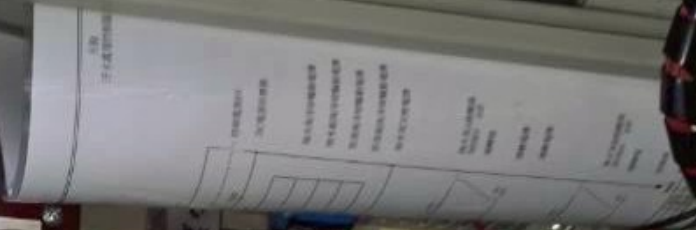
手動 自動

手動 自動

3

4

FIRE 滅火



Terminal block with multiple rows of connections. Labels include: 1, 2, 3, 4, 5, 6, 7, 8, 9, 10, 11, 12, 13, 14, 15, 16, 17, 18, 19, 20, 21, 22, 23, 24, 25, 26, 27, 28, 29, 30, 31, 32, 33, 34, 35, 36, 37, 38, 39, 40, 41, 42, 43, 44, 45, 46, 47, 48, 49, 50, 51, 52, 53, 54, 55, 56, 57, 58, 59, 60, 61, 62, 63, 64, 65, 66, 67, 68, 69, 70, 71, 72, 73, 74, 75, 76, 77, 78, 79, 80, 81, 82, 83, 84, 85, 86, 87, 88, 89, 90, 91, 92, 93, 94, 95, 96, 97, 98, 99, 100.

Labels for terminal blocks: 01-05, 06-10, 11-15, 16-20, 21-25, 26-30, 31-35, 36-40, 41-45, 46-50, 51-55, 56-60, 61-65, 66-70, 71-75, 76-80, 81-85, 86-90, 91-95, 96-100.

Labels for terminal blocks: 11, 12, 13, 14, 15, 16, 17, 18, 19, 20, 21, 22, 23, 24, 25, 26, 27, 28, 29, 30, 31, 32, 33, 34, 35, 36, 37, 38, 39, 40, 41, 42, 43, 44, 45, 46, 47, 48, 49, 50, 51, 52, 53, 54, 55, 56, 57, 58, 59, 60, 61, 62, 63, 64, 65, 66, 67, 68, 69, 70, 71, 72, 73, 74, 75, 76, 77, 78, 79, 80, 81, 82, 83, 84, 85, 86, 87, 88, 89, 90, 91, 92, 93, 94, 95, 96, 97, 98, 99, 100.





CENTER 21
SMART CLAMP METER

OFF

~ A

~ V

NCV

☀

Hz

HOLD

A

3.65

Ⓟ

Ⓟ

Ⓟ

Ⓟ